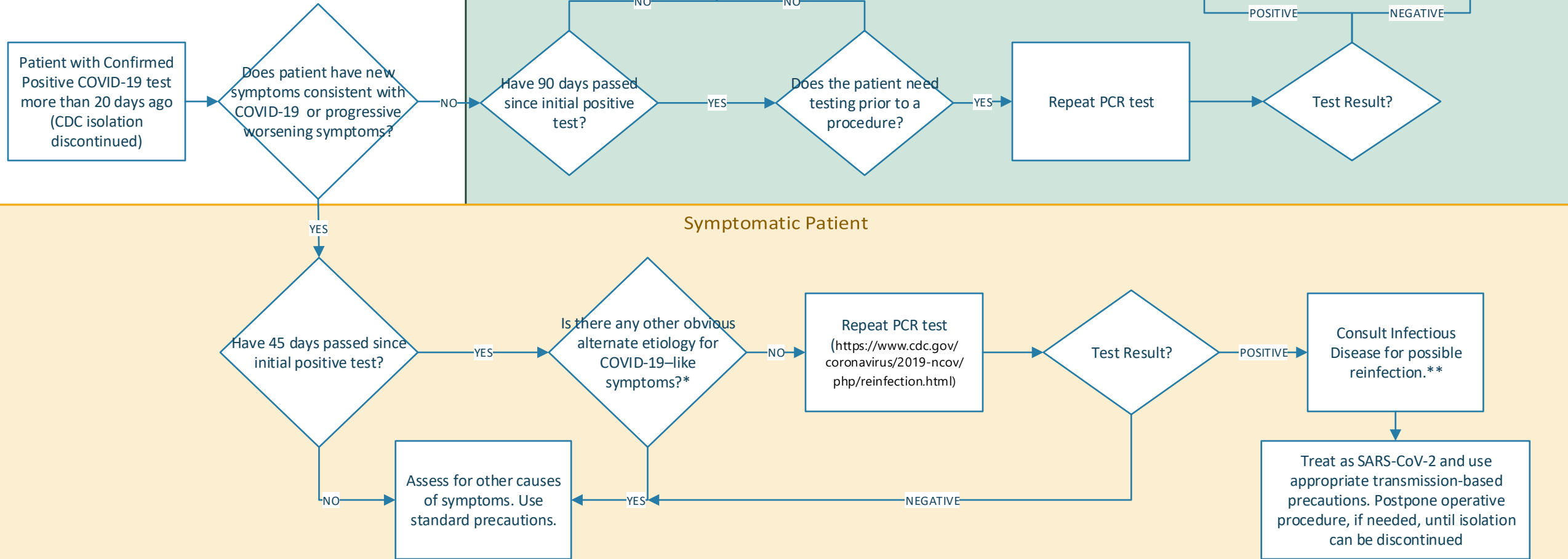


COVID-19 Reinfection & Retesting Guidance

11/09/20



Retesting within 90 days of an initial positive test is rarely needed.

- Reinfection is rare. Risk factors for reinfection appear to be mild initial infection, a duration of 3-4 months since initial infection, and inability to mount an immune response.
- Due to the rare nature of reinfection-consider more proximate causes (e.g. SOB due to CHF exacerbation/fluid overload, renal insufficiency with fluid overload, exacerbation of COPD)*
- If test result is positive, contact the lab to determine if cycle threshold (Ct) result is available. If yes, Ct < 33 suggests higher level of production of virus and indicator this may be reinfection**