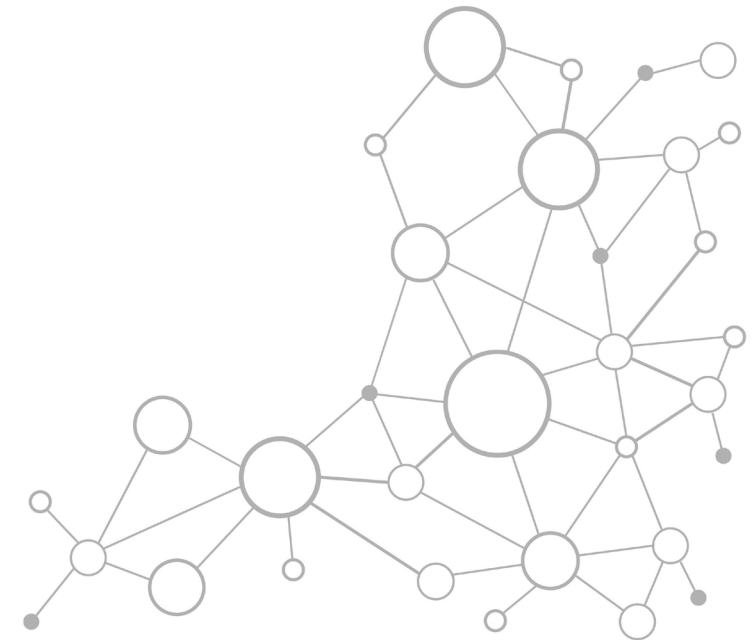


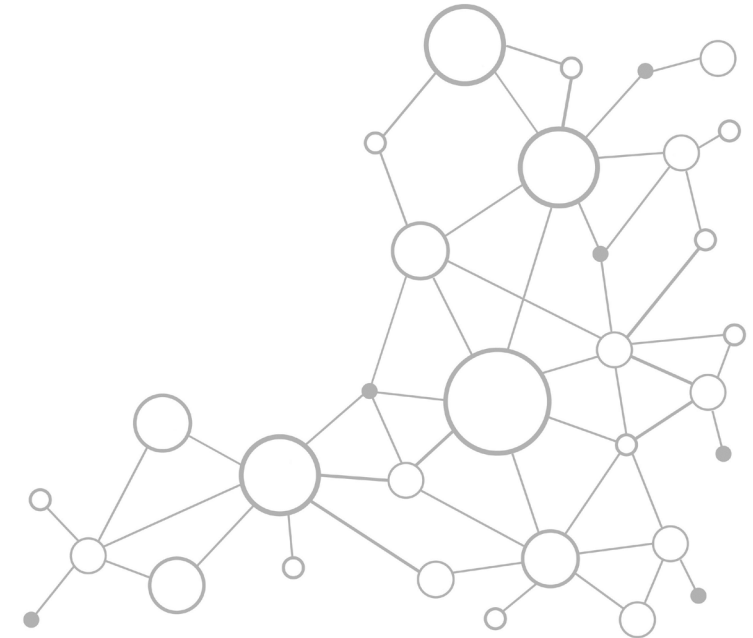
Employer Based Trends In Our Market

August 11, 2020



Agenda

- Welcome & Introduction
- Presentation: *Employer Based Trends In Our Market*
- Open Q&A
- SOHO Updates
 - PPE Updates
 - Upcoming Webinars

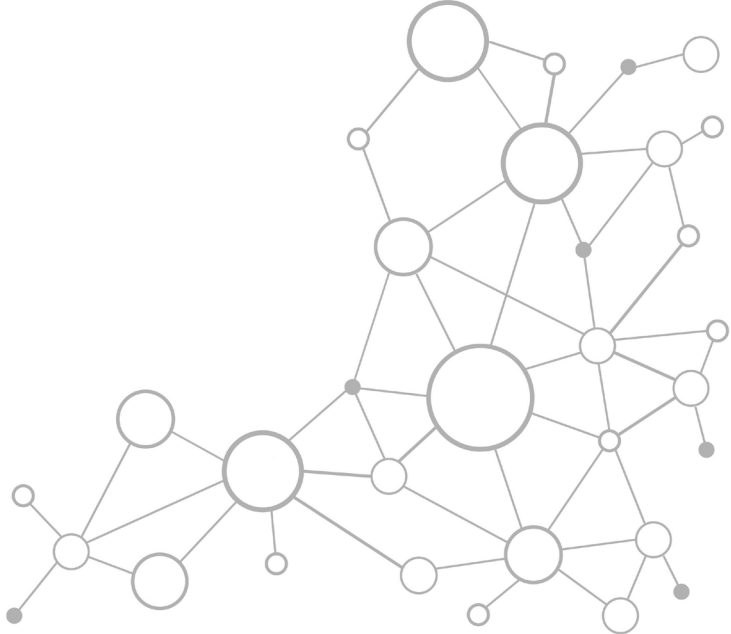




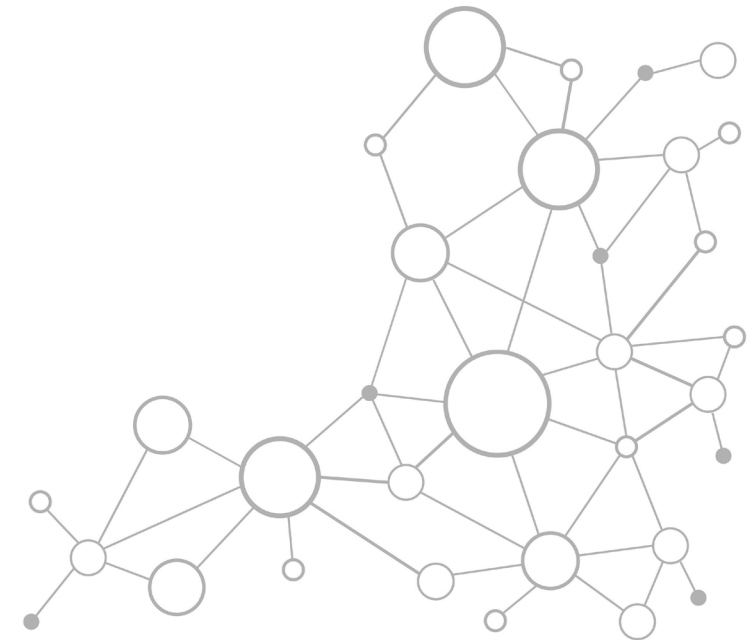
Jeffrey Hogan

Rogers Benefit Group

Open Q&A

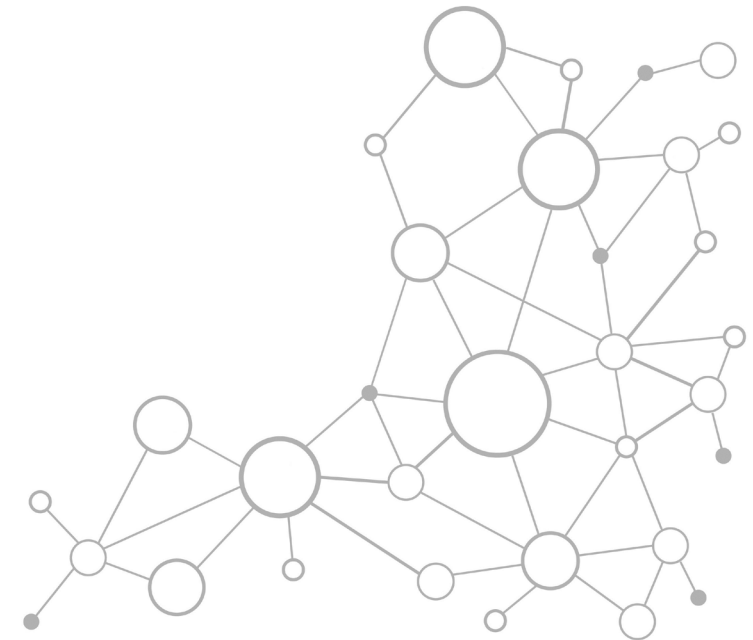


SOHO Updates



PPE Updates

Kathy Strauch | Project Manager, Business Development



PPE Updates: McKesson

↘ Gloves

- Conserve gloves whenever possible
- Will continue for many months ahead
- Global demand increased by 2X
- Government purchasing gloves directly
- Reference CDC guidelines for optimizing gloves

↘ Products available without allocation continues to be updated

- Visit McKesson website to view the current product list



PPE Updates: McKesson

↘ Flu vaccines

- Advised to accept allocations for needles and syringes
- Flu vaccine demand anticipated to be 20% higher than last season

↘ Shoe Covers & Bouffant Caps Arriving in Coming Weeks

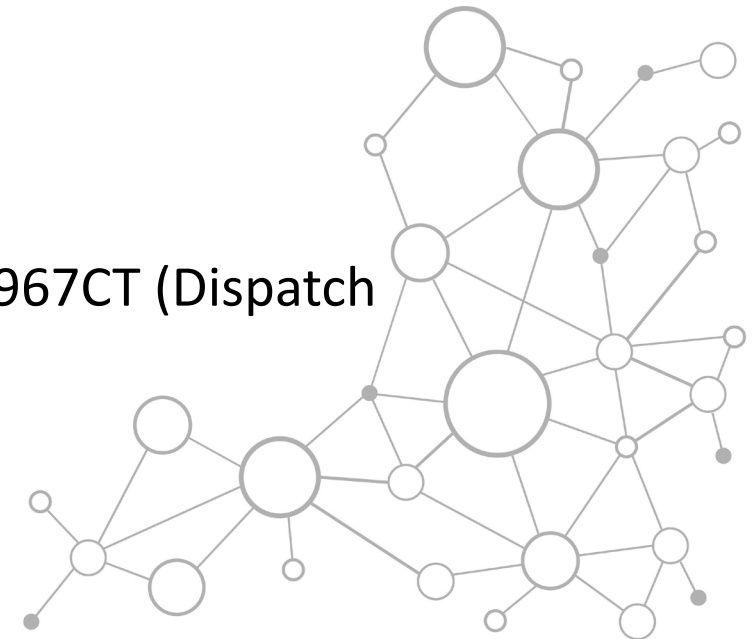
- Visit McKesson website to view the current product list

↘ Wipes

- Suggested to move to spray and wiping with cloth
- Item#: CLO68970 (Germicidal Spray Clorox, 32oz) & #CLO68967CT (Dispatch w/Bleach Trigger, 22oz)

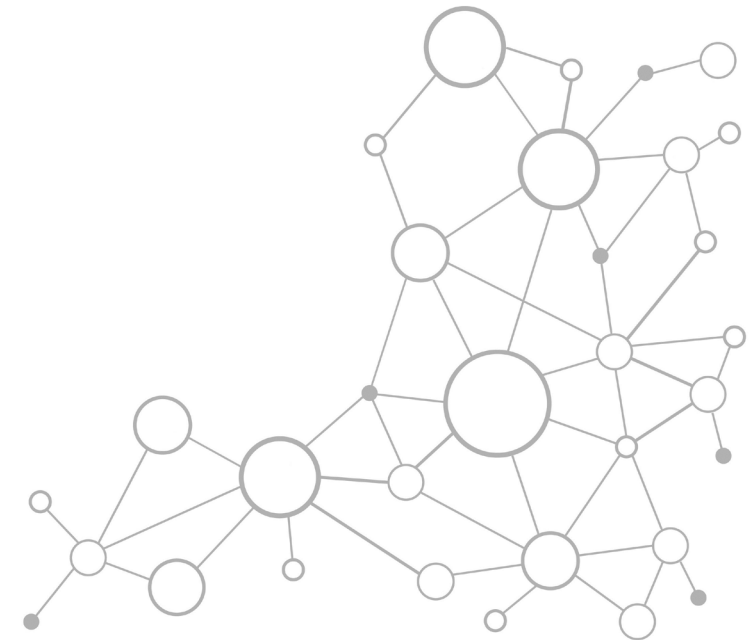


*For questions or assistance with PPE, contact
Kathy Strauch at Kathleen.Strauch@sfhcp.org*



Upcoming Webinars

Lisa Farren | Director, Marketing and Communications



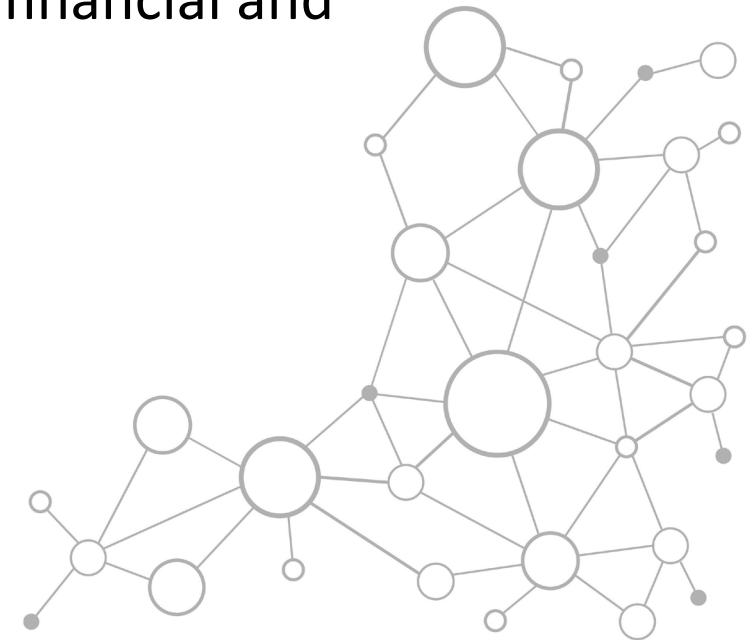
Upcoming Session – August 25th

↘ SOHO HEALTH Delivering Value Through Our Business Solutions Programs

- **Campbell Petrie, Inc.** - insurance consulting company offering group medical, dental, disability and life insurance
- **Smith Brothers** – provider of medical malpractice, and financial and retirement services

↘ Suggestions for Future Topics: Email Lisa Farren

- Lisa.Farren@sfhcp.org



Thank you for joining us!

